

---

# **COMPANY PROFILE**

## **J R EXIM**

# J R EXIM -Simply Reliable..



Incorporated in Surat, One of the fastest growing cities of INDIA, **J R EXIM** has become the name to reckon with when the question of purchasing premium quality products of Textiles and Agriculture. We have grown by leaps and bounds under the gifted headship of **Mr. Kapil Senjaliya**.





# Our Vision

With a challenging journey as an indentor, we have achieved a reasonably great height in the industry. Our journey towards excellence and success is consistent and rewarding at the same time. We want to see J R EXIM as a premier supplier of Textiles and Agriculture products while holding the highest regard of our valued customers.

# Our Mission

We at J R EXIM, like to keep it simple and make sure what we do the best benefit to our customers and gain their trust. We just don't work but we exert to deliver values not just goods. Our approach towards business is very transparent with our esteemed suppliers and buyers. We believe trust is a core element for mutually healthy business relationships.



- " OUR STRATEGY TO CARRY OUT BUSINESS IS BASED ON TWO FACTORS – PROFESSIONALISM AND TRANSPARENCY.

DUE TO THESE TWO FACTORS, WE HAVE ALWAYS BEEN SUCCESSFUL IN EARNING TRUST OF OUR CUSTOMERS.

WE HAVE TRIUMPHED CUSTOMER SATISFACTION WITH OUR QUALITY, PRICE, AND TIMELY DELIVERY. "

- **Inquiry:** Firstly, An Inquiry is received from the buyer, which is then thoroughly studied keeping in mind the nature and requirements.
- **Sourcing:** Next step comes to sourcing the buyer's requirement from local or global suppliers with utmost sincerity.
- **Market & Price Research:** With proper market research, best and competitive prices are given to the potential buyers which brings faith and transparency for the win-win situation.
- **Shipment:** Last but not the least, Shipment of these goods are to be taken care by export professionals which allow us to build long term business relation.

# WHY CHOOSE US



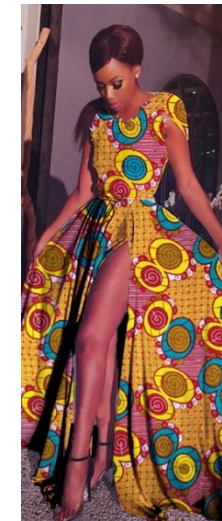
- **Wide Range of Quality Products:** We offer best quality products sourced to our clients. Our Products Comply with International Standards as per client requirement. We offer best quality inspection for assurance to buyer.
- **Competitive Price and Timely Delivery:** For us, timely delivery of the shipment is a prestige task, We have come up as a name to rely when the need to get the best-in-class products. We have state-of-the-art transportation facilities that enable us to safely deliver the consignment hassle-free.
- **Great & Experienced Team:** The capacity to move from strength to strength is instilled in us by our team. This team works with utmost dedication to attain heights of success. Our team works with full might to get to the peak of client satisfaction by treating the customers as an integral part of our working.
- **Vendor Network:** Constructing an expansive market network is not a day's task, the task requires unflinching dedication to get associated with some of the leading names in the network. We make sure that each and every vendor, present in our network, has in built fully automated & efficient unit of manufacturing, research & development wing to meet international standards, has high credibility and capability to cater to the bulk export orders.
- **Worldwide Export:** We export products worldwide. Our services meet global standards.

# OUR PRODUCTS



- 100% COTTON PRINTED FABRIC

- Real Wax
- Java
- Emboss
- Poplin Super
- Kent-e



- 'Khangra' and 'Kitanga' styles of cotton dressing from the Saurashtra region in Gujarat INDIA.

# OUR PRODUCTS



- **100% POLYESTER PRINTED FABRIC:**
  - Raymond Wax (10.5 kg to 13.5 kg)
  - Micro (10.5 kg to 13 kg)
  - According to buyer's requirements

Nearly 1.65 mtr long piece of cloth with square borders is known as Khanga in East and West Africa and locals mostly use this to cover their heads," Kitanga is a 12-metre long cloth used by the Africans mainly to wrap up the waist.



# OUR PRODUCTS



## ■ GARMENTS:

- Kaftan
- Deera
- T-Shirts
- Angelina
- According to buyer's requirements

Our exports to African countries  
comprises from East and West African  
countries





# PEANUTS



We have developed a certified farming process using high oleic/linoleic acid relation in comparison with common peanuts resulting in a longer life of the product in whole kernels and splits.

## We supply:

Peanuts in shell, Peanut Bold and Java type, Blanched Peanuts bold and Java, Peanut Butter, Flavored Peanuts.

## Size Specifications:

Peanut in Shell  
Count: 24/28  
Count 28/32

Peanut:  
Count: 38/42, 40/50, 50/60  
Count: 60/70, 70/80, 80/100, 100/120

## Packaging:

PP Bag/Jute Bag (25/50Kg)

**Supply Capacity:** 1000 MT/Month

## Specifications:

Moisture: 7%,  
Oil Content: 48%,  
Shelling Ratio: 72.5%,

Foreign Material: 0.1%  
Damage Kernel: 1%  
Aflatoxin: 4PPB



# CORPORATE CLOSE-UP



J R EXIM is a tribute to your aesthetic senses that amplifies the overall beauty quotient of your space. From concept to consignment, we at J R EXIM believe in delivering the highest benchmarks of quality.

For us, excellence is not a sprint but a marathon and we take things very seriously when delivering the best value for our customers. Evolving every moment, J R EXIM is always ready to understand consumer sentiments, meet their demands, and go beyond their expectations. We accept nothing less than the best for us and for our clients.

## STANDARDS WE FOLLOW

For Textiles & Agricultural:

“Quality is more than a promise. It is genuine performance and we promise to get this genuine performance right.”



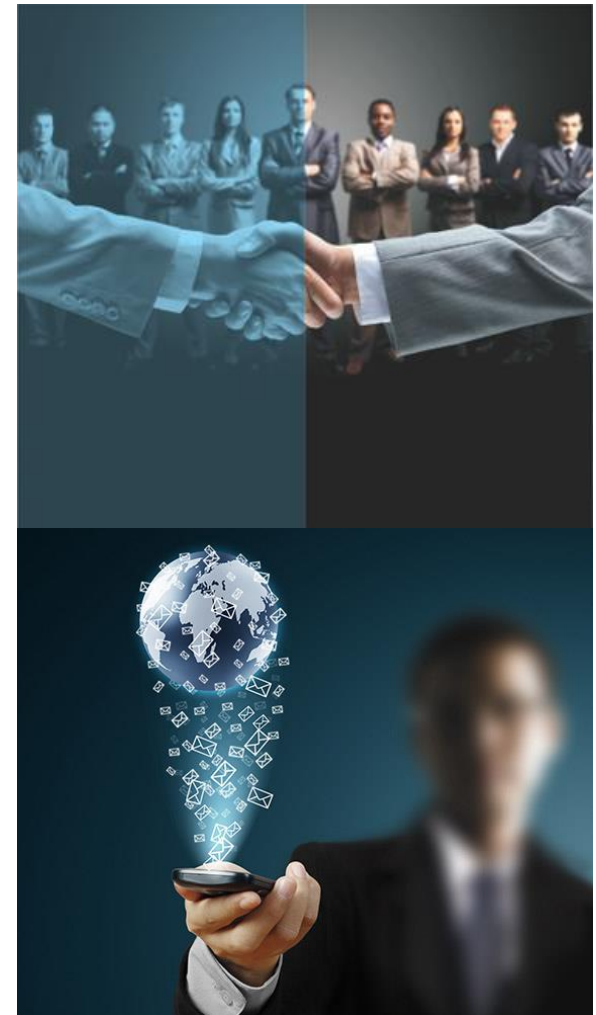
# CONTACT US



“J R EXIM”

REGISTERED OFFICE:  
A/803, SHYAM SRUSHTI,  
L.P.SAVANI ROAD, ADAJAN,  
SURAT-395009, GUJARAT.  
INDIA.

CORPORATE OFFICE:  
M-2, SOMESHWAR SQUARE,  
2<sup>ND</sup> FLOOR, VESU,  
SURAT-395007, GUJARAT.  
INDIA.



™

**JR Exim**  
Simply Reliable

+91 9510900755  
info@jrexim.com  
jrexim.com@gmail.com  
www.jrexim.com

## THANK YOU